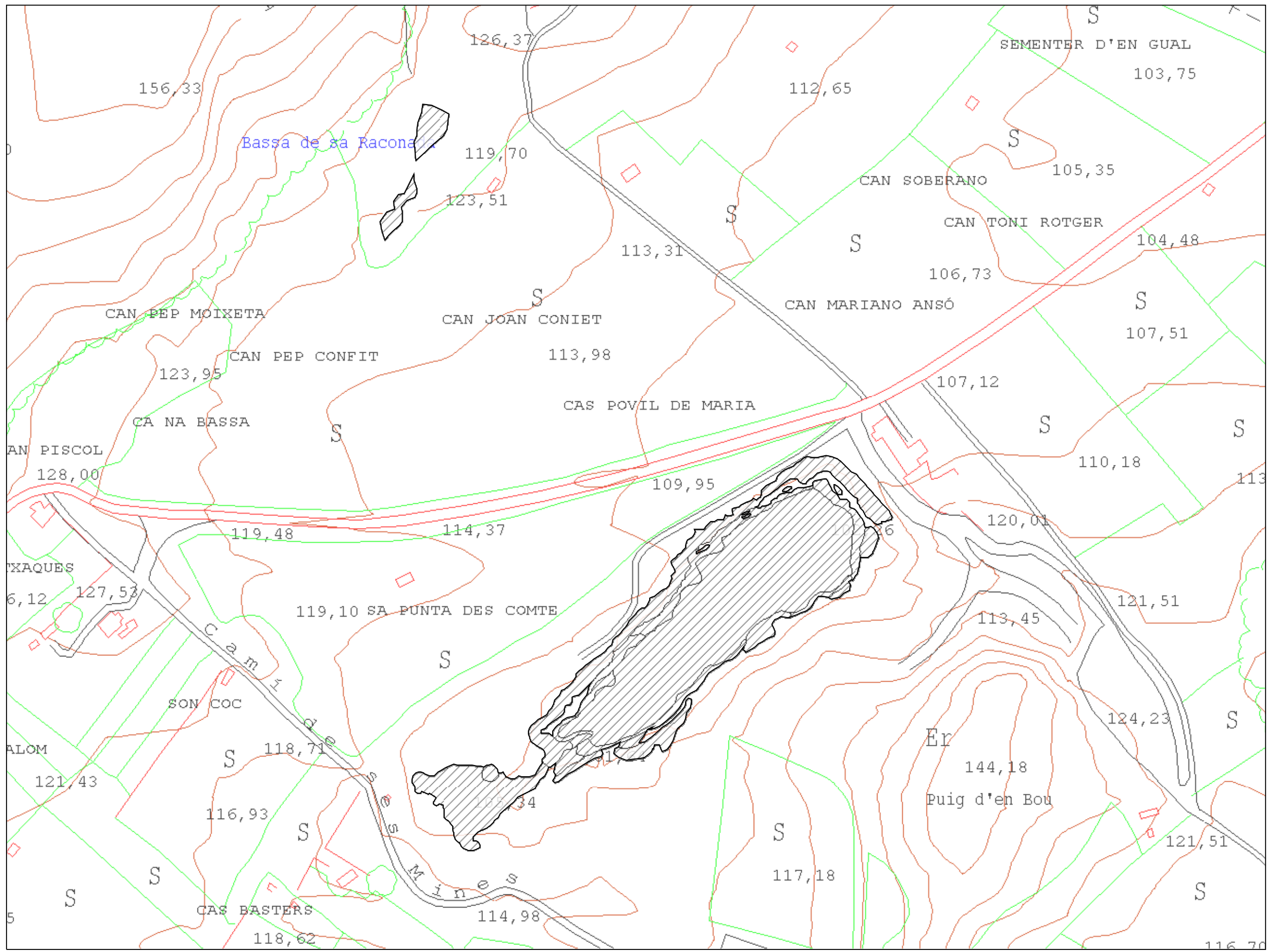
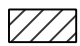



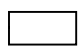


# Delimitació de les Zones Humides de les Illes Balears

## MAZHA04: Mines de Sineu



H natural	A artificial
	Aiguamoll Actual
	Aiguamoll Potencial
	Reblits
	Reblits posteriors a 1985
	Limit



GOVERN DE LES ILLES BALEARS  
Conselleria de Medi Ambient  
Direcció General de Recursos Hídrics

Edició 

Abril 2006

ILLA: MALLORCA

